

ADDITIONS TO LAB 3 {40 POINTS}

EXPERIMENT 1 SIMULATIONS: (15 PTS)

Procedure:

1. (2 pts) Modify the circuit within PSpice to look like **Fig. 4**. Run a transient simulation for 2ms. Turn on the voltages and currents to verify that all voltages and currents are the same as DC analysis. Print the circuit with all currents and voltages showing. Measure the gain by measuring the input peak to peak value and the output peak to peak value. Note that the input and output is marked by the location of the probes. Print this graph and put into your lab notebook. Record the values for the input and output peak to peak values.

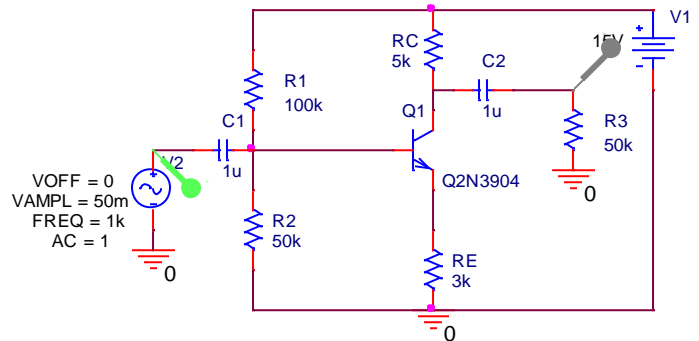


Fig. 4

- (2 pts) Change the probe locations to be on the other terminal of the capacitors for both the input location and the output location. Rerun the transient simulation and observe the difference in the signal. Comment what the capacitors C1 and C2 are doing in this circuit.
- (2 pts) Change the value of R2 to a parameter and perform a transient parametric sweep for 2ms over the following values for R2: 1k, 40k, 50k, 60k, 100k, 120k. Print these graphs at Vout which is the voltage above the R3 resistor. Explain what is happening in these graphs. If you need to understand it better, you can perform more simulations by changing R2 to a value and looking at the voltages and currents for one specific value of R2. Put any simulation results in your lab notebook along with your explanations.
- (2 pts) Set R2=50k. Run an AC sweep(from 0.1 to 10Meg) and measure Vout/Vin. Print the magnitude bode plot result and place in your lab notebook. Create another table for gain, Rin, and Rout. Make a column for simulation and measurement. Record your value for the gain under the simulation results.
- (2 pts) Change R3=50k to R3=100. Rerun the AC sweep and measure Vout/Vin. Print this magnitude bode plot and explain why it is attenuating the output signal.
- (2 pts) Change R3 back to 50k. Use the following information to find Rin through simulation. This is a different way of measuring these values that is easier to do in the lab environment. You will simulate this method and then repeat the same measurement in lab.

To Measure Input Resistance:

Add a resistor (R_{test}) between the source and the circuit input (as shown in **Fig. 5**). Measure the ac signal voltage on both sides of R_{test} using the scope (peak-to-peak is alright).

R_{in} is the value you are trying to find.
To find R_{in} , use **Formula 1.0**.

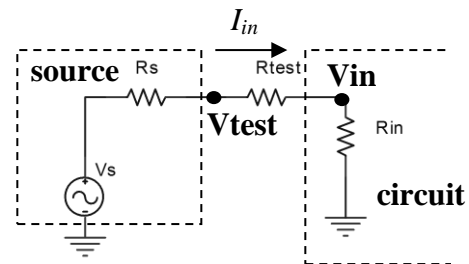


Fig. 5

Formula 1.0

$$I_{in} = \frac{V_{test} - V_{in}}{R_{test}} \quad R_{in} = \frac{V_{in}}{I_{in}}$$

In **Fig. 5**, R_{test} is unknown and needs to be added to the circuit. Modify the circuit to look like **Fig. 6**.

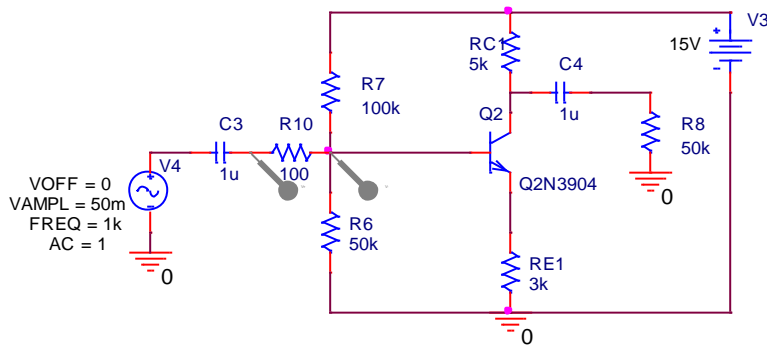


Fig. 6.

Note that R_{10} is the same as R_{test} seen in **Fig. 5**. Measure the peak to peak value across R_{10} when a transient analysis is run. This gives the value for $V_{test} - V_{in}$. Measure the peak to peak value at the right side probe of R_{10} . This is V_{in} . Calculate R_{in} from these measurements and record these calculations in your notebook.

7. (3 pts) Now measure R_{out} . Change the circuit back to look like **Fig. 4**.

To Measure Output Resistance:

Measure the signal voltage output without R_L . This is the *open-circuit* output (V_{TH}). Remember that the open circuit voltage relates directly to the Thévenin voltage of a Thévenin equivalent circuit.

Reconnect R_L and measure the loaded output (V_L). Use these two measurements to calculate the output resistance (R_{out}) of this amplifier, using **Formula 1.1**.

Formula 1.1

$$R_o = \frac{V_{TH} - V_L}{V_L} \cdot R_L$$

Remove both C_4 and R_8 of **Fig. 4** to measure V_{TH} . Measure the peak to peak value at this location. Replace both of them and measure V_L (peak to peak value) at the node right above R_8 . Note that $R_L = R_8$.

IMPORTANT: Be sure to measure AC signal voltages (peak-to-peak is alright).

EXPERIMENT 2 MEASUREMENTS OF BJT CIRCUITS: (25 pts)

Procedure:

- (2 pts) Build the circuit of **Fig. 4**. Observe the output versus the input on the oscilloscope and print these graphs for your notebook. Record the peak to peak values for the input and output. Divide the output peak to peak value by the input peak to peak value. This is the gain of the circuit.
- (2 pts) Multiply the gain by 0.708 (note that this is -3dB in V/V). Determine at what magnitude your output peak to peak will be for this new gain value.
- (2 pts) Reduce the frequency from 1k until the output measures this new peak to peak value. This frequency is the starting frequency for the bandwidth of the circuit. Note its value.
- (2 pts) Measure R_{in} and R_{out} the same way as you performed the simulation. Record their values and comment on the differences between the simulation and measured values.

The circuit of **Fig. 4** is a Common Emitter (CE) with Emitter Degeneration. **Fig. 7 and 8** are modifications which turn it into a Common Emitter (CE) amplifier.

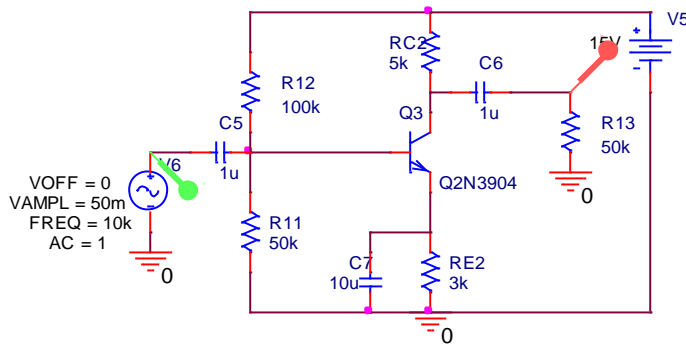
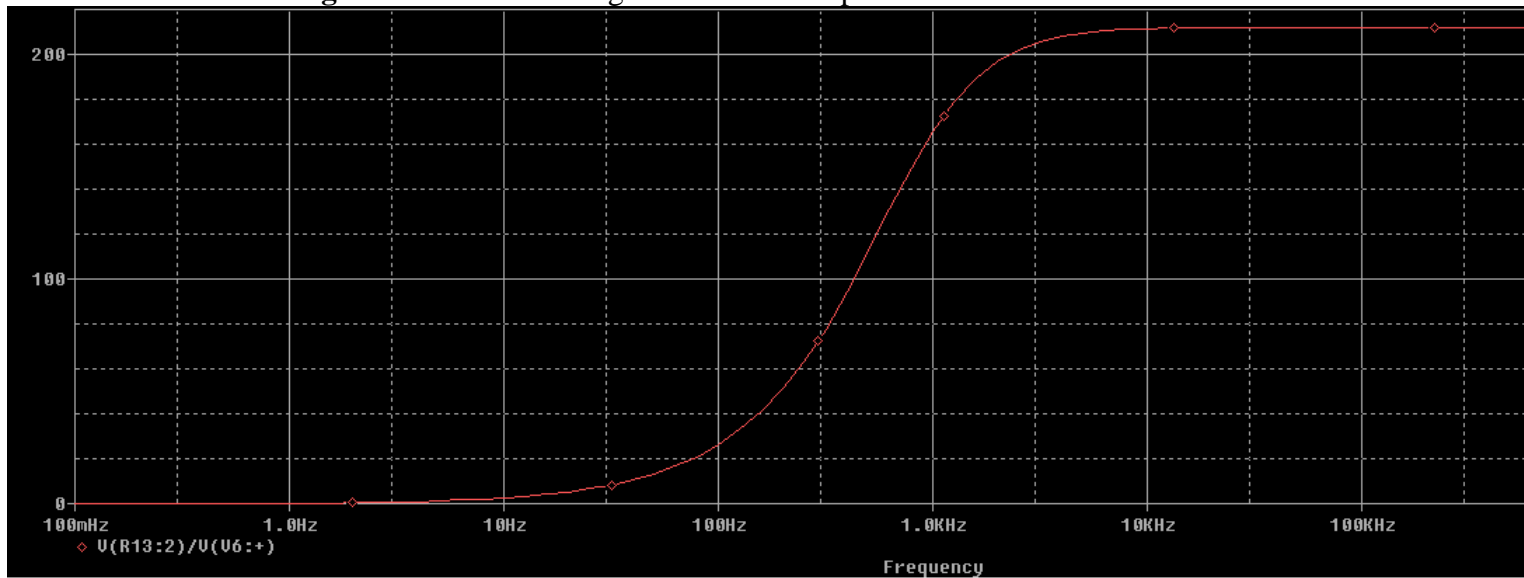


Fig. 7.

Simulation results for **Fig. 7** show the following for the AC sweep:



If the input amplitude of 50m is used, the output AC would be $V_{out} = V_{in} * 210$ which results in $V_{out} = 10.5V$. This would definitely pull the transistor out of saturation. Also, it is observed from this sweep that the bandwidth starts at approximately 900Hz. To test this circuit, the frequency needs to be higher. Test it at 10kHz. The input signal can be modified by a voltage divider as shown in **Fig. 8**.

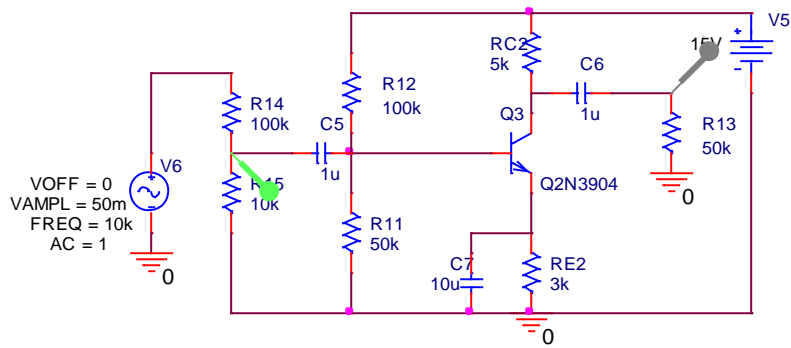
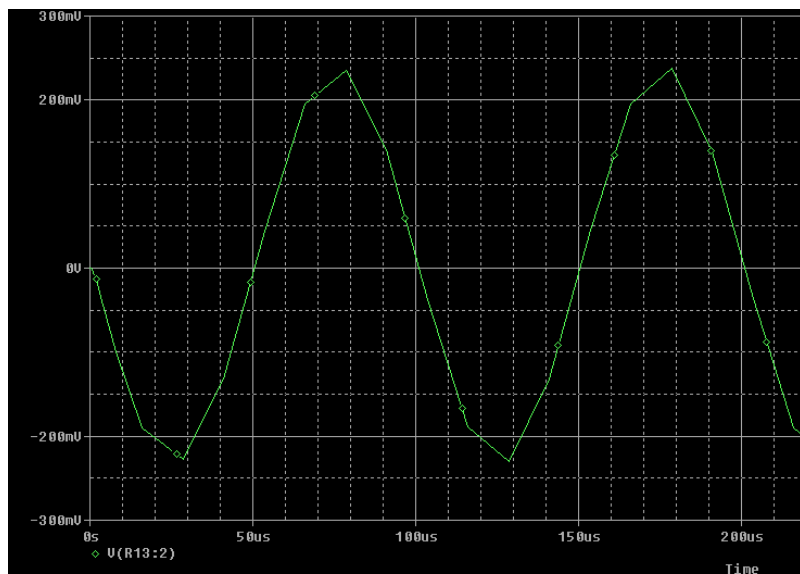
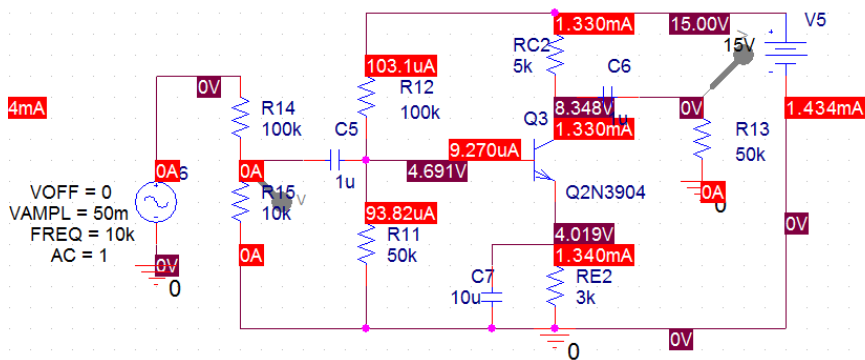


Fig. 8.

The transient analysis also showed the following results:



5. (7 pts) Modify the circuit to look like **Fig. 8**. Measure the gain of this circuit and compare to the simulation provided above. Comment on why this gain is so much higher than for the CE with emitter degeneration.

The circuit can be changed into a Common Collector (CC) which is seen in **Fig. 9**.

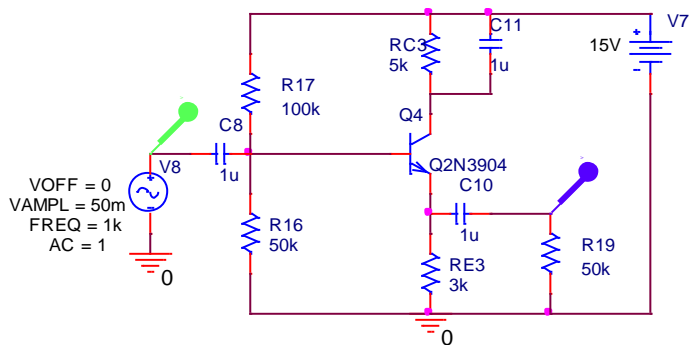
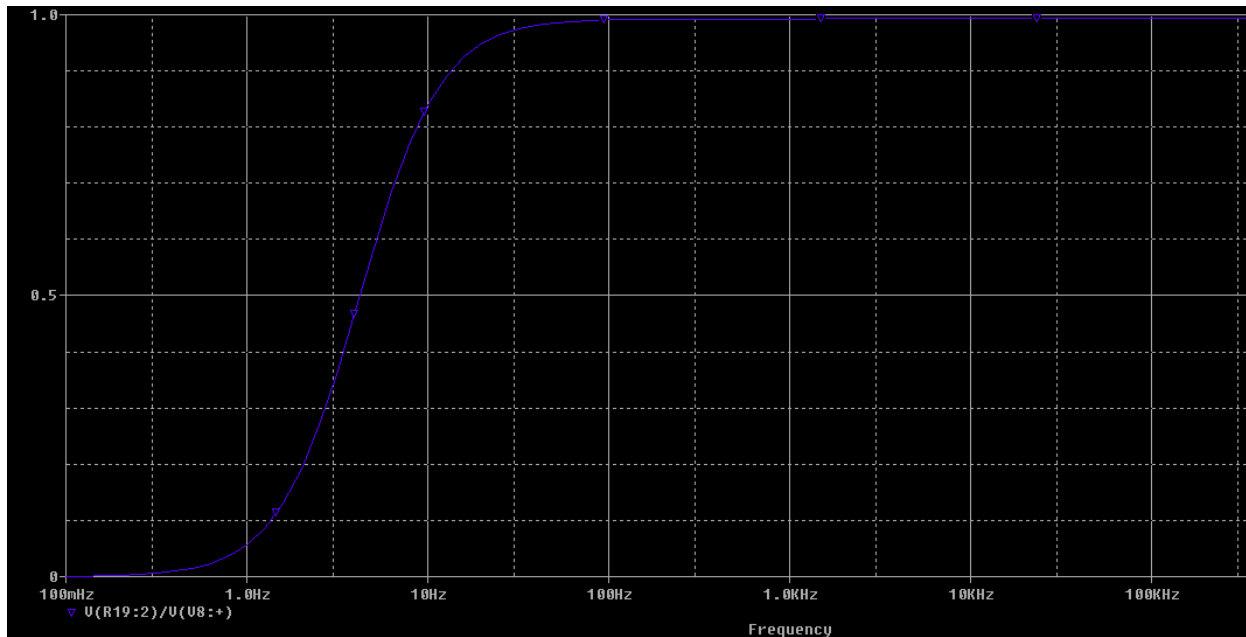
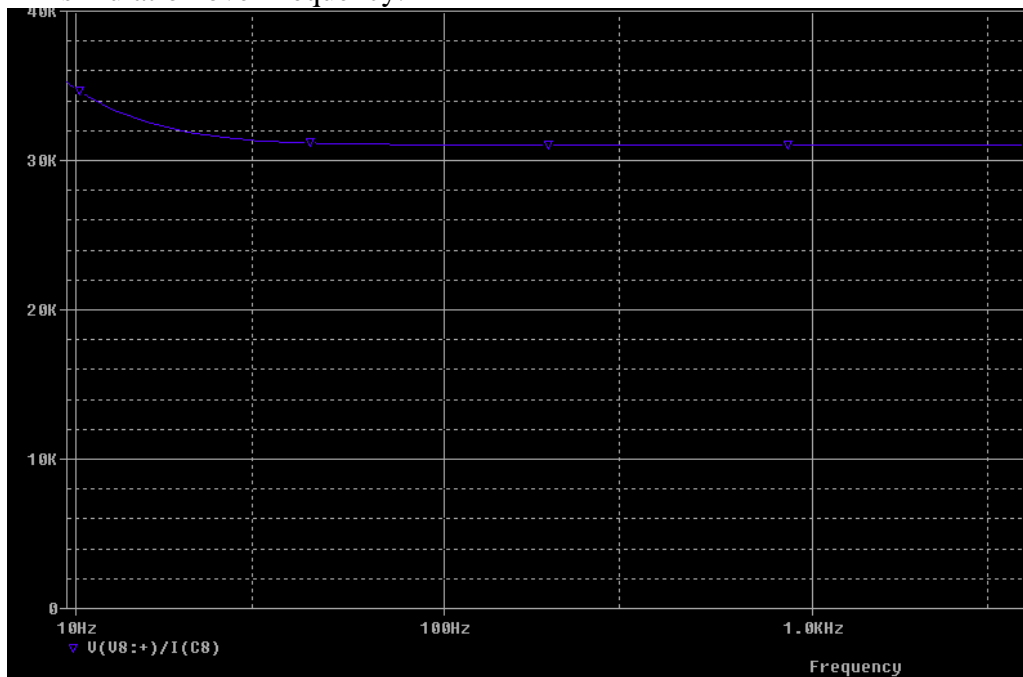


Fig. 9.

Simulation results for **Fig. 9** show the following for the AC sweep:



Rin simulation over frequency:



Rout calculation from simulation:

$$V_{TH} = 99.2m \text{ (peak to peak)}$$

$$V_L = 99m \text{ (peak to peak)}$$

$$R_L = 50k$$

$$R_{out} = \frac{V_{TH} - V_L}{V_L} R_L = \frac{(99.2m - 99m)}{99m} \cdot 50k = 101$$

6. (10 pts) Build the circuit in **Fig. 9**. Measure the gain, Rin and Rout. Compare the values to the simulated values.