

Final Assembly

- ▶ Your final project chip consists of a core and a pad ring
 - ▶ Core is the guts
 - ▶ Pad ring (or pad frame) connects the guts to the outside world
- ▶ It's critical to do a functional simulation of your whole chip, including the pads!
 - ▶ Make sure you can drive the chip from the external interface
 - ▶ Make sure you have the core connected to the pads correctly.

Chip Core

- ▶ The Chip Core is everything that is inside the Pad Ring
 - ▶ Try to floorplan your core so that it's as small a rectangle as possible
 - ▶ At the very least, make sure it fits in the frame you've chosen
 - ▶ Make sure to connect vdd and gnd in the core!
 - ▶ This core can be DRC and LVS checked
 - ▶ This core can be simulated for functionality
 - ▶ This core is then routed to the pads

Core Sizes

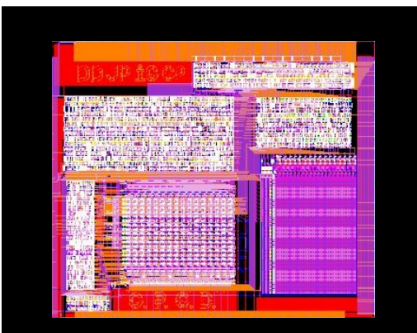
- ▶ All things are in terms of Tiny Chip Units (TCUs)
 - ▶ 1 TCU = 1.5x1.5mm outside dimension
 - ▶ 1 TCU = 900x900 usable core area
 - ▶ 2 TCU = 900x2300 usable core area
 - ▶ 4 TCU = 2300x2300 usable core area
- ▶ More on this later!

Connecting Core to Pads

- ▶ Once your core is complete, you need to connect it to the pad frame
 - ▶ Then you re-do the functional simulation, but through the pads this time
 - ▶ You should be able to re-use your testfixture
 - ▶ Also a final DRC and LVS which includes the pads
- ▶ Use **vcar** for connecting the core to the pads!
 - ▶ Chapter 12 in the CAD manual

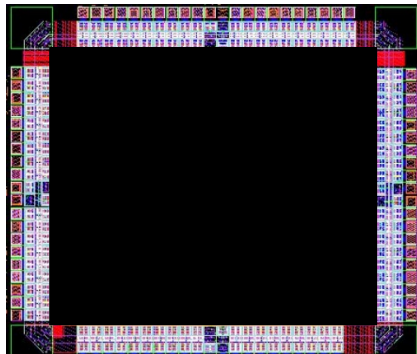
Core

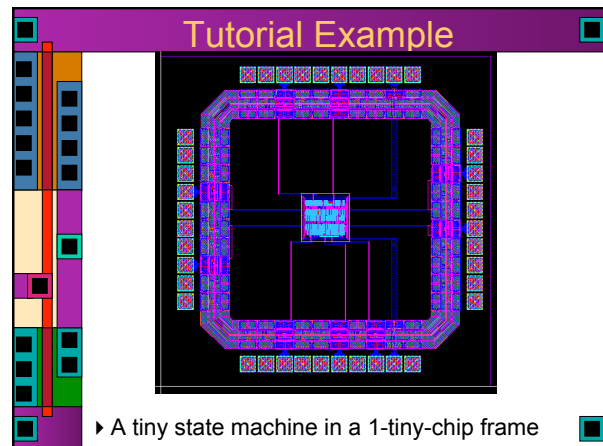
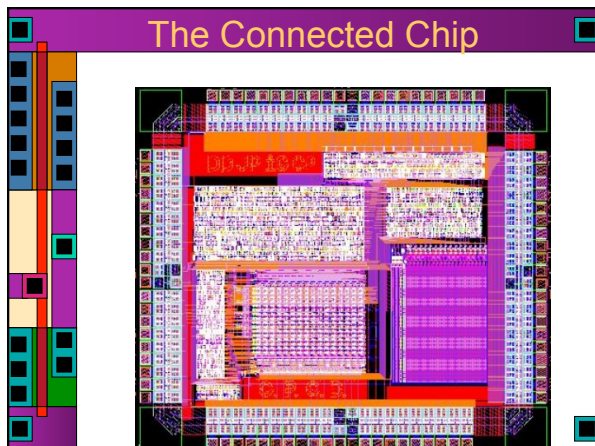
- ▶ The guts of your chip



Pad Ring

- ▶ The connection to the outside world





Pad Cells

- Started with a set of pads from MOSIS
 - Originally from Tanner Tools pads
 - Problem: the pads don't DRC, LVS, or simulate!
- Cameron Charles re-did the cells in 2002 (as a grad student) to fix these issues
- Result is **UofU_Pads**
 - `/uusoc/facility/cad_common/local/Cadence/lib/OA/UofU_Pads`
 - Use library manager to add this library
 - Name it UofU_Pads
 - They now DRC, LVS, and simulate!

Driving Large Capacitances

$$t_{pHL} = \frac{C_L V_{swing}}{I_{av}}$$

Transistor Sizing

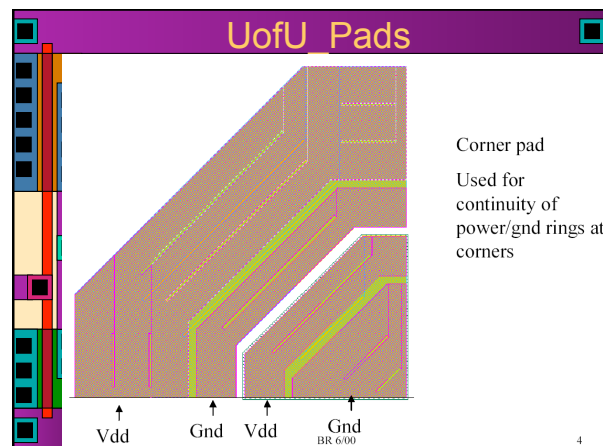
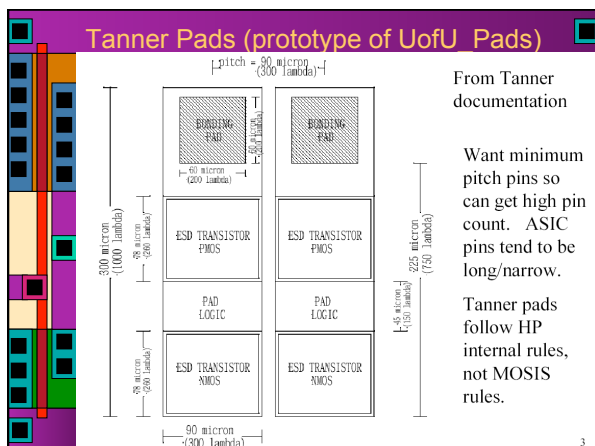
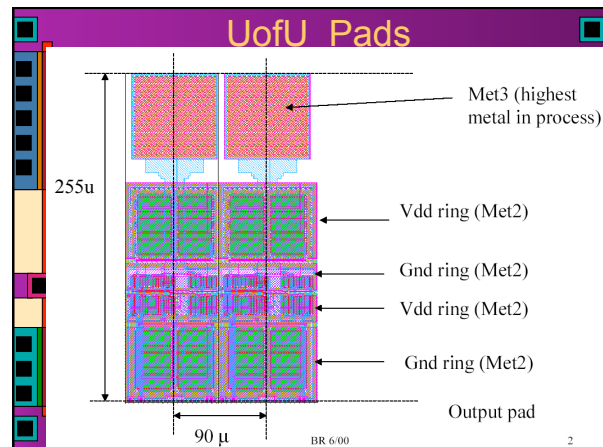
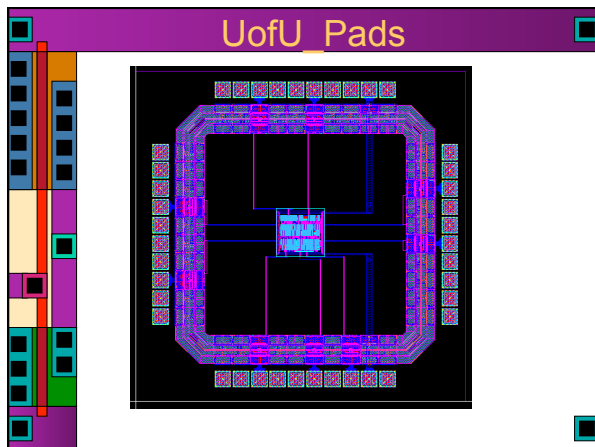
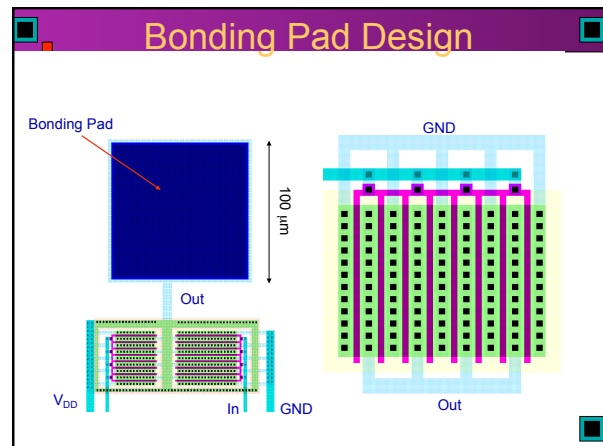
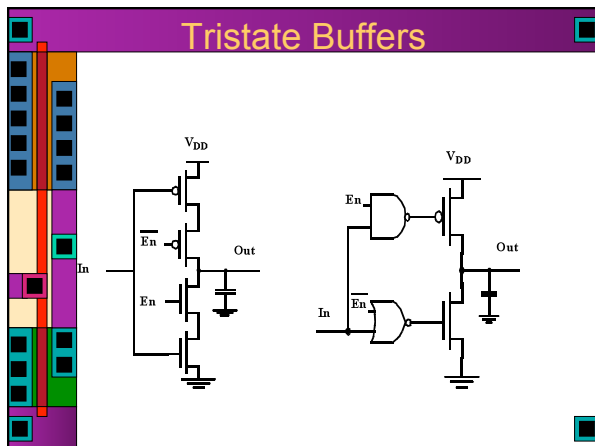
Using Cascaded Buffers

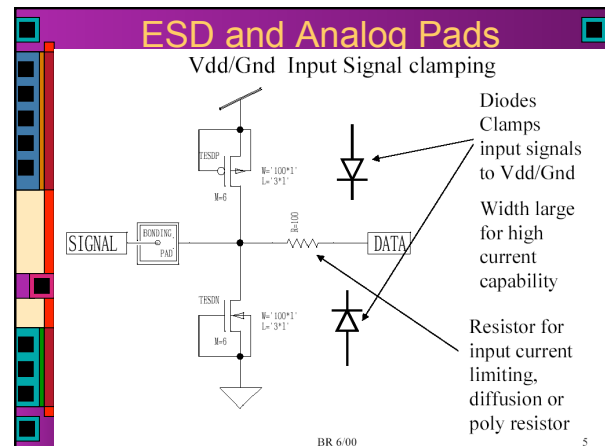
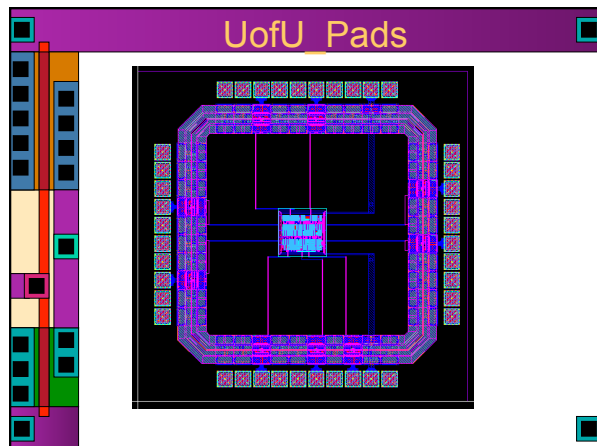
$u_{opt} = e$?

How to Design Large Transistors

(a) small transistors in parallel

(b) circular transistors





ESD Protection

A thick film device built from Met1, field oxide, and diffusion is used for ESD protection.

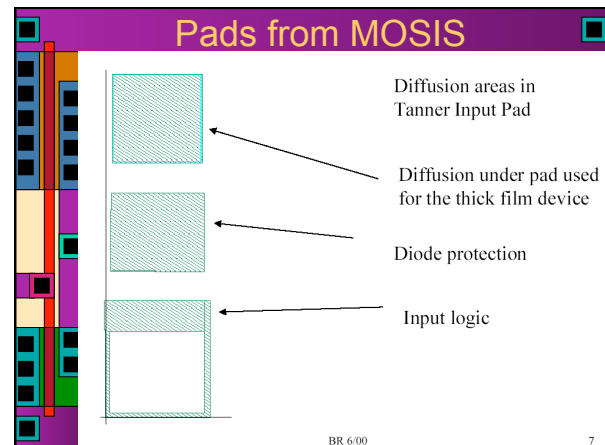
Field oxide device usually has threshold voltage in the 10's of volts.

Metal 1 provides 'gate' of device, tied to pad, also tied to drain.

Width of device is very high to provide low on resistance, high current density.

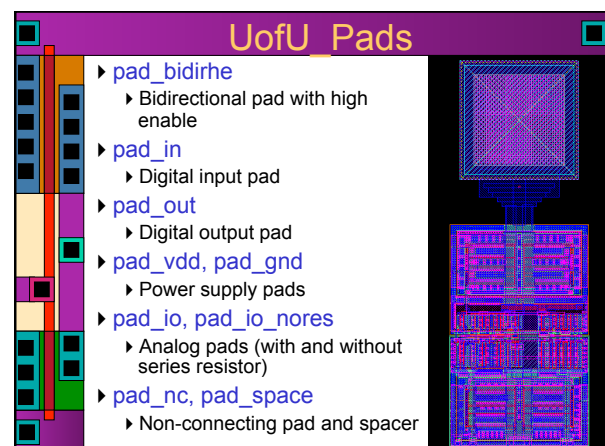
Will handle any short duration spikes due to electro static discharge.

Most processes have special high threshold transistors that can be used for ESD protection instead of field oxide devices.



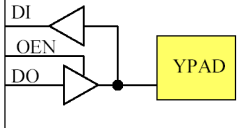
ASIC Pads

- Most ASIC pads have multiple Vdd/Gnd Rings
- Leda Systems 0.25u, 0.35u pad library has the following rings
 - Avdd, Avss -- analog VDD/Gnd
 - Evdd, Evss -- external Vdd/Gnd -- supports pads with different Vdd/Gnd from core
 - Nvdd, Nvss -- internal Vdd/Gnd -- core VDD/GND
 - Vss/Vdd -- ?? (also core Vdd/Gnd??)



Pad Interfaces

- pad_bidirhe (bi-directional pad)



```

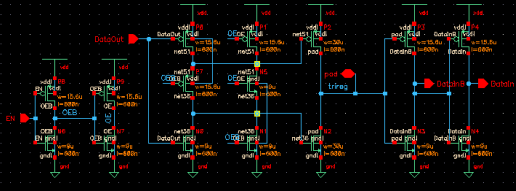
module pad_bidirhe (OEN,
DO, DI, YPAD);
input OEN; (EN)
input DO; (DataOut)
output DI; (DataIn, DataInB)
inout YPAD; (pad)

```

If OEN = '1', then YPAD = DO else YPAD = 'Z'.

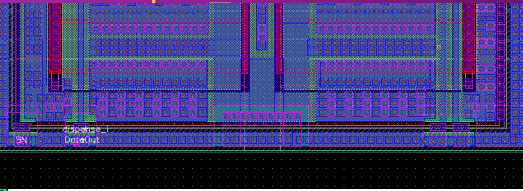
- DataOut drives a 78(p) x 45(n) inverter (30x)
- Which then drives a 200(p) x 200(n) output driver (133x)
- DataIn and DataInB come from 96(p) x 54(n) inverters (36x)
- EN drives a 16(p) x 9(n) inverter (6x)
- All signal pads are built from this one
- All signals on are M2

pad_bidirhe



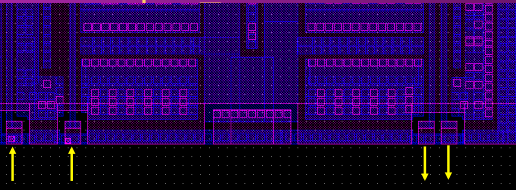
- Moderately complex pullup/pulldown structure

pad_bidirhe



- M2 connections for EN, DataOut, DataIn, DataInB

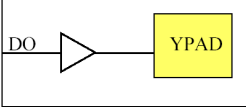
pad_bidirhe



- Look at just the metal layers...
 - EN, DataOut, DataInB, DataIn is the order
- Middle connection is direct connection to the pad (don't use it!)
- You put metal2 shape pins over the connection points (for icc)

UofU Pads

- pad_out (output only pad)

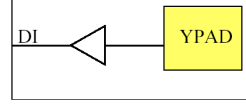


```

module pad_out (DO, YPAD);
output YPAD; (pad)
input DO; (DataOut)

```

- pad_in (input only pad)

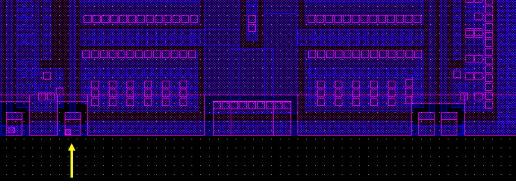


```

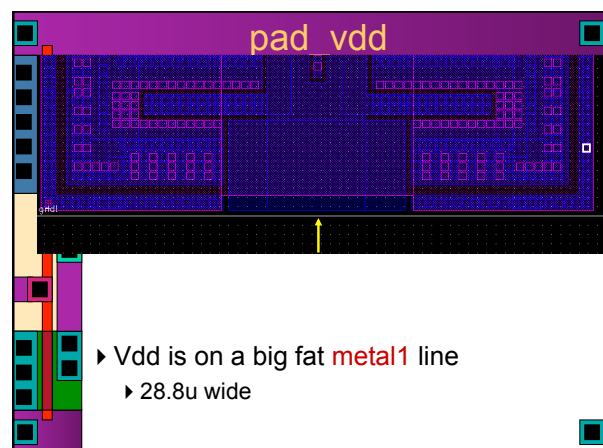
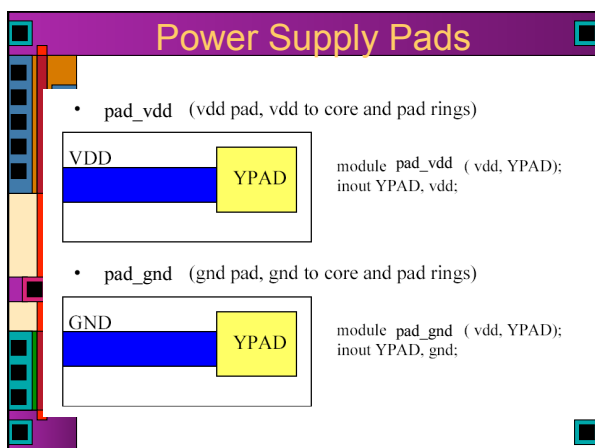
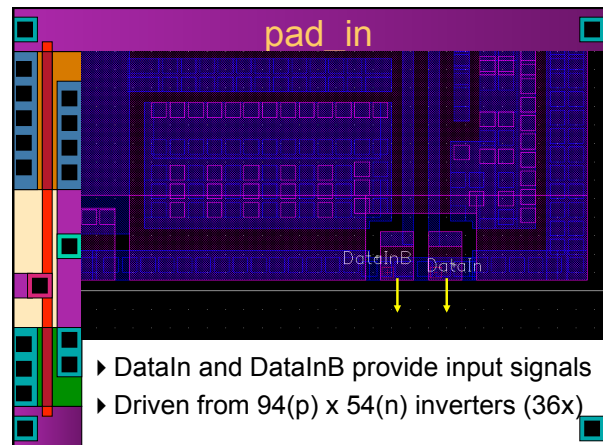
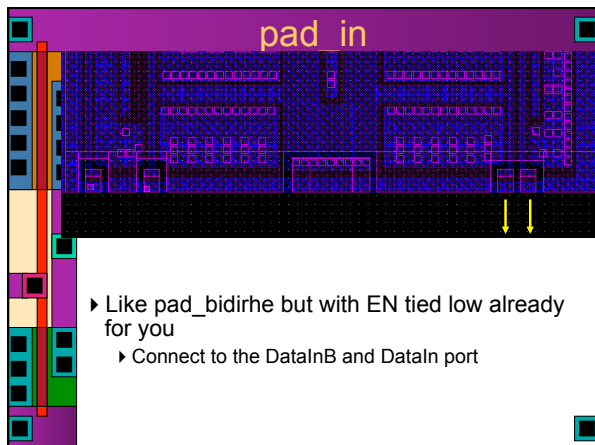
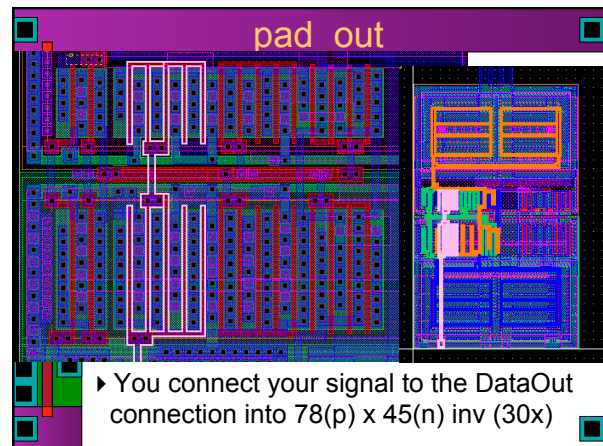
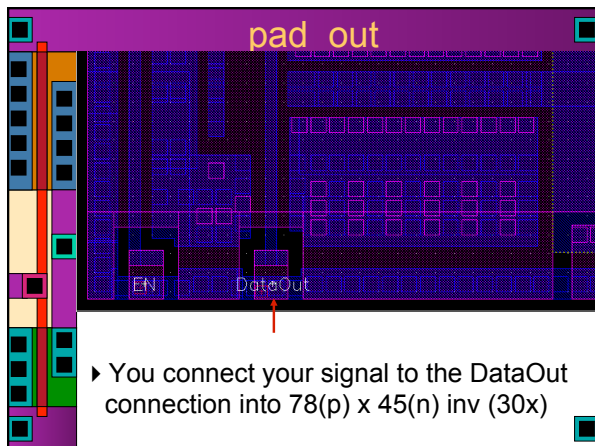
module pad_in (DI, YPAD);
output DI; (DataIn, DataInB)
input YPAD; (pad)

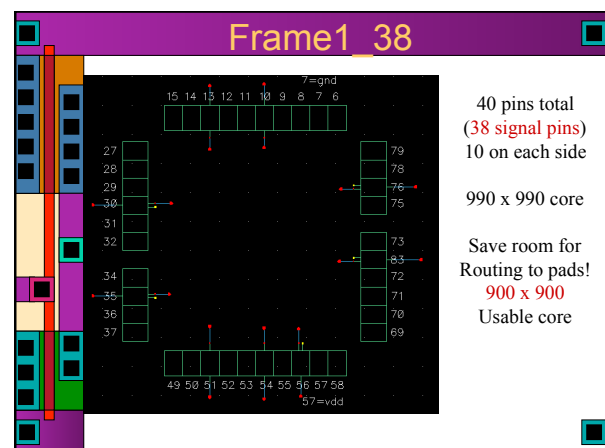
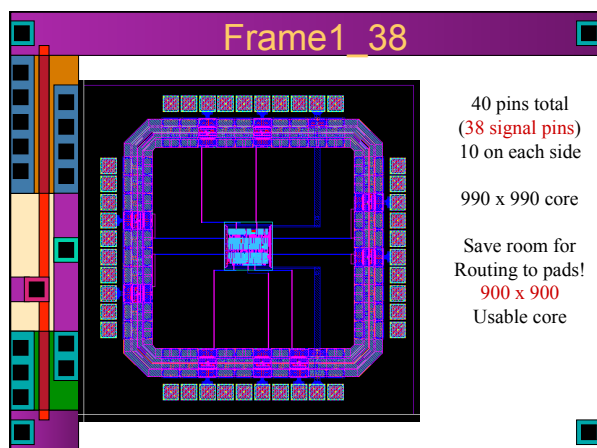
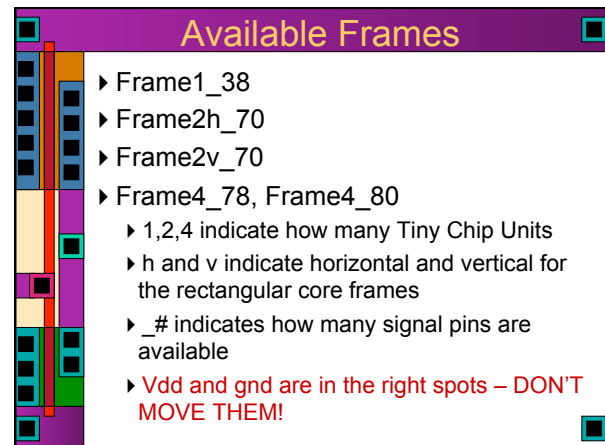
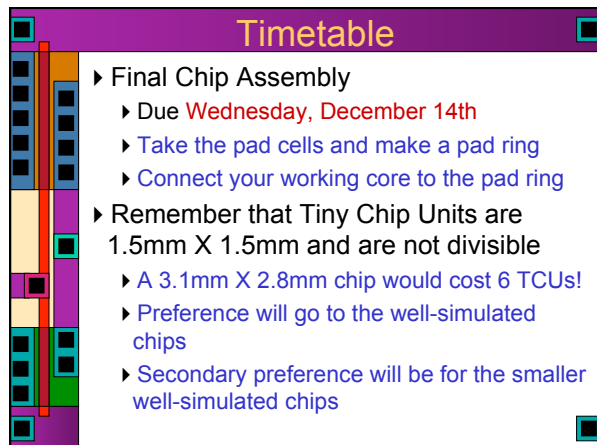
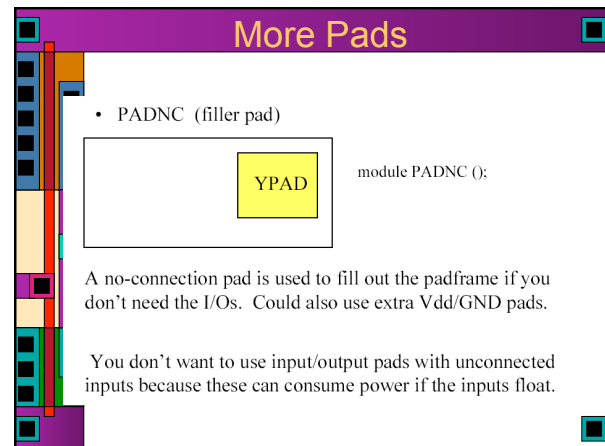
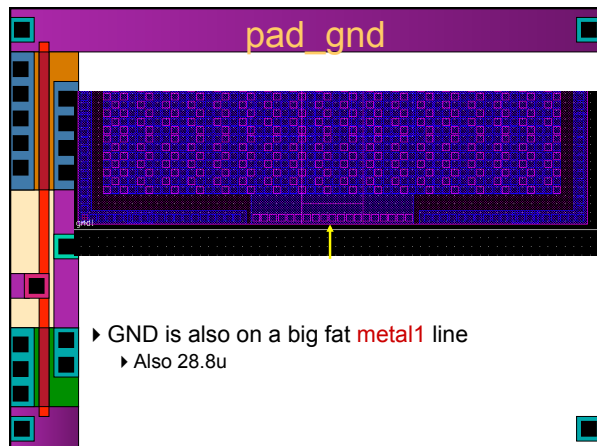
```

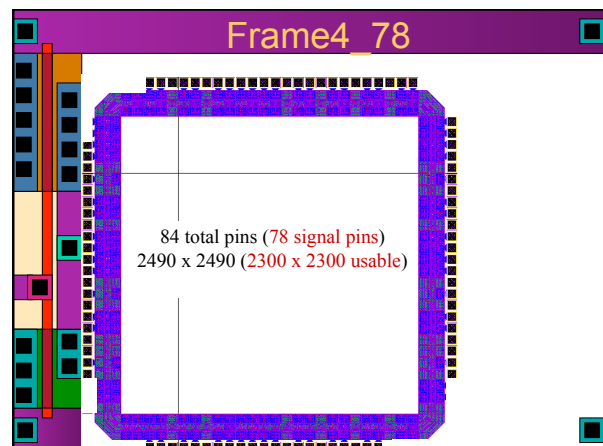
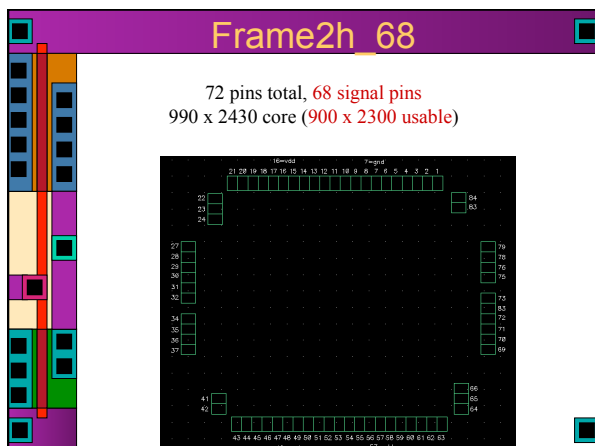
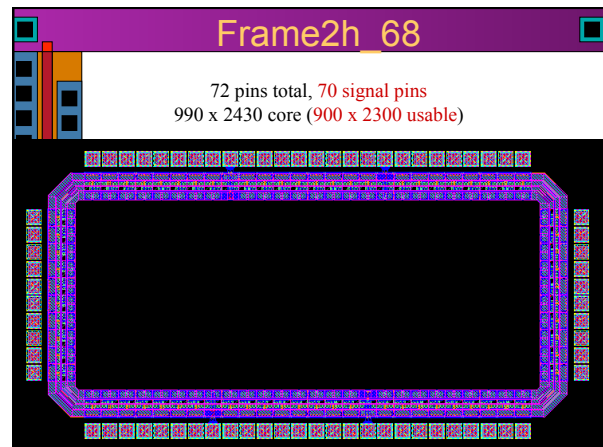
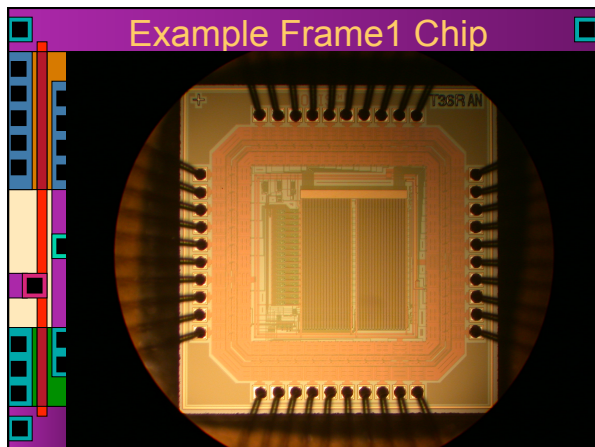
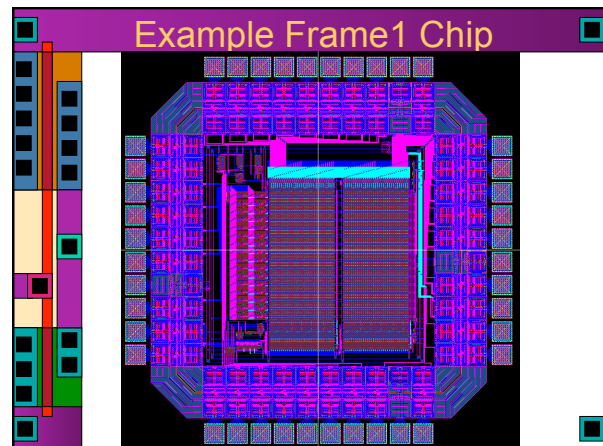
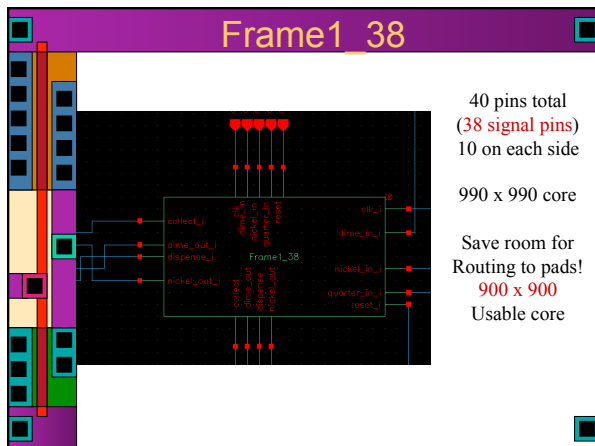
pad_out

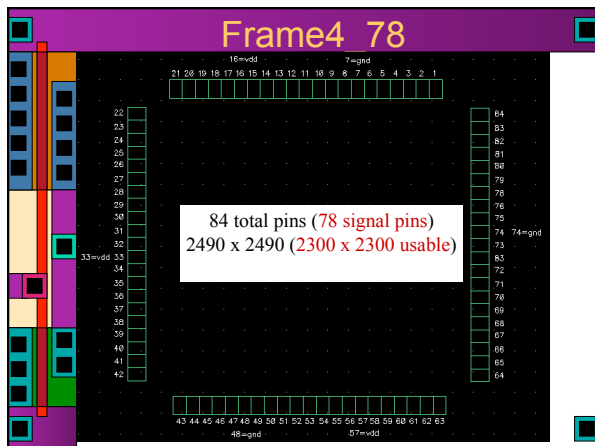


- Like pad_bidirhe but with EN already tied high for you
- All you need to connect is DataOut



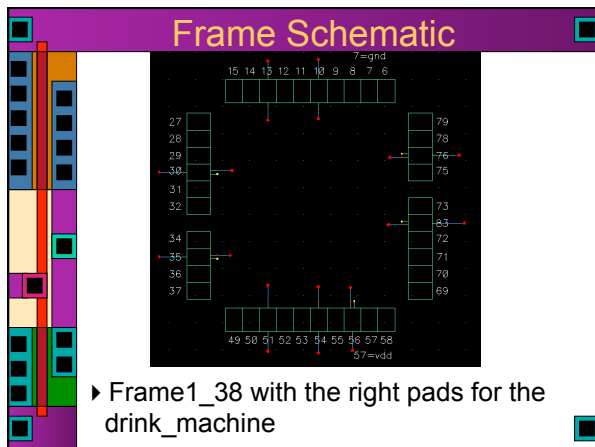




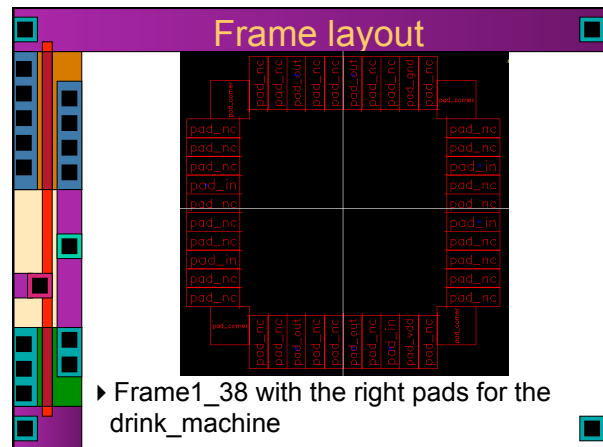


How to Use the Rings

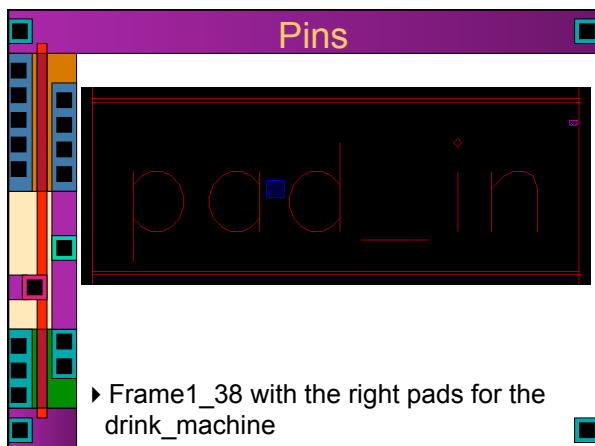
- ▶ Copy the pad ring of your choice
 - ▶ `/uusoc/facility/cad_common/local/Cadence/lib/OA/UofU_Pads`
 - ▶ From **UofU_Pads**
 - ▶ To your project directory
- ▶ Leave the **pad_vdd** and **pad_gnd** where they are!
- ▶ Select other pads, use properties to change to the pad type you want
 - ▶ DON'T move them!
 - ▶ Use **pad_bidirhe**, **pad_out**, and **pad_in**



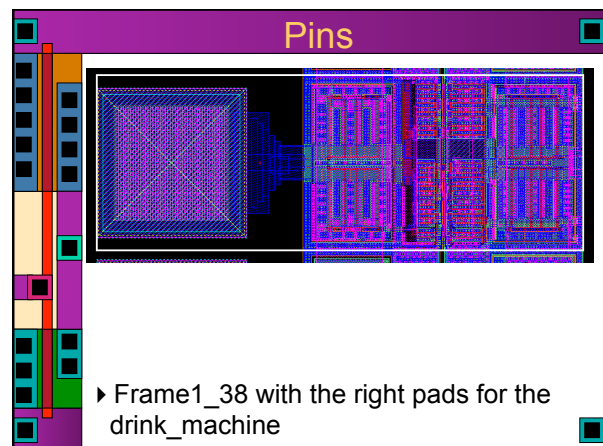
- ▶ Frame1_38 with the right pads for the drink_machine



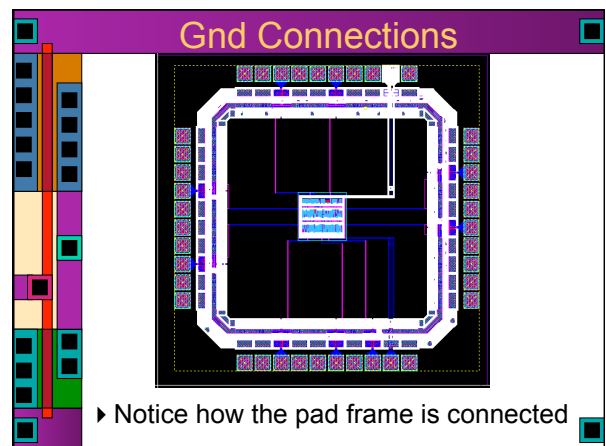
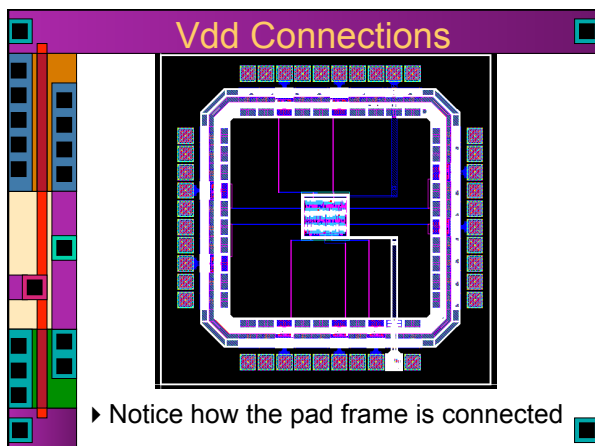
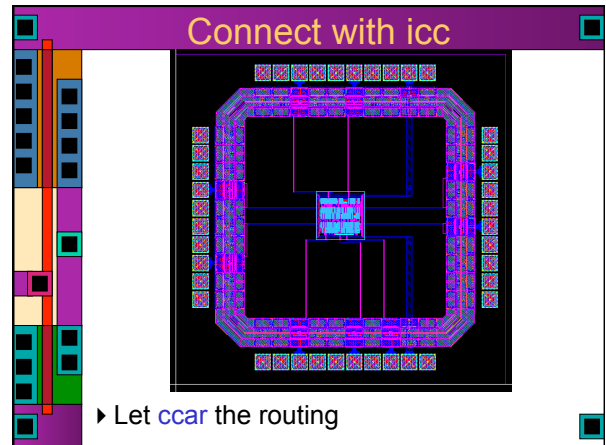
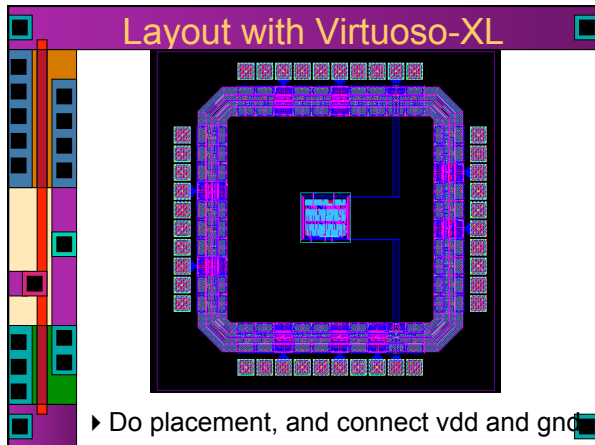
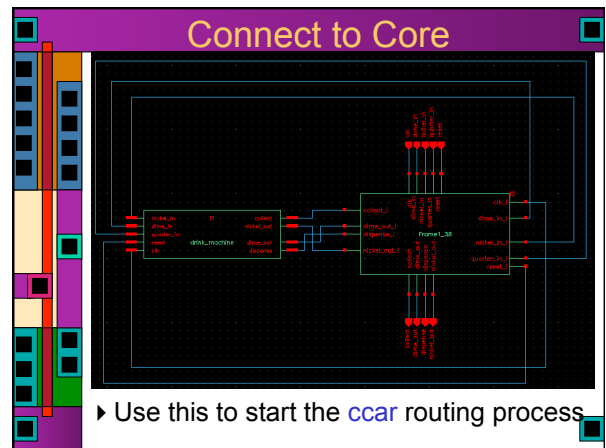
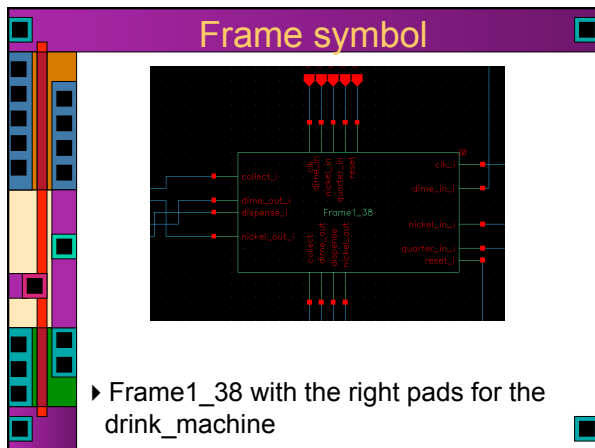
- ▶ Frame1_38 with the right pads for the drink_machine



- ▶ Frame1_38 with the right pads for the drink_machine

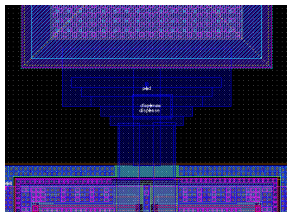


- ▶ Frame1_38 with the right pads for the drink_machine



Now Simulate the Whole Chip

- ▶ Use essentially the same testbench that you used for the core
 - ▶ This time you'll be simulating with the pads in place
 - ▶ You'll need to place one more set of pins so that the wholechip cell has connection points



What Does This Mean?

- ▶ For now, concentrate on getting your chip core assembled, working, DRCed and LVSeD.
 - ▶ You need a working core before you need pads!
- ▶ Make sure your core fits in the pad ring that you want to use
- ▶ Then, use **vcars** to assemble the frame and core
 - ▶ Simulate, LVS, DRC with the whole thing!

Output to GDS (Stream)

- ▶ Once everything is completely finished, you need to export the whole chip to **GDS (stream)** format
 - ▶ Use the **export->stream** function in CIW
 - ▶ use **stream4gds.map** as the Layer Map Table
 - ▶ From
 [/uusoc/facility/cad_common/local/class/6710/F11/cadence/map_files](#)
- ▶ Fill in **Library Name**, **Top Cell Name** and **Output File Name**
- ▶ I will read this GDS file in and re-DRC that layout...

Fabrication Schedule

- ▶ MOSIS educational run
 - ▶ Chips that go into the fab queue need to be absolutely and completely ready to go:
 - ▶ Friday Jan 10th at the LATEST
 - ▶ There are a few more steps that projects need to go through to make them fab-ready even after DRC/LVS
 - ▶ If you make logos and names, those have to pass DRC too!
 - ▶ Metal3 is recommended for logos...

Final Report

- ▶ Final Report, due **Wed, December 14**
- ▶ **Three** parts:
 - ▶ **First:** Technical Paper (about project)
 - ▶ Not more than 10 pages
 - ▶ IEEE two-column format
 - ▶ Describe what makes your chip interesting
 - ▶ This is a self-contained paper of the form that might be submitted to a conference or journal
 - ▶ **Second:** Project Details
 - ▶ Floorplan, pinout, and system block diagram
 - ▶ Schematics and layouts for all major parts
 - ▶ A table of contents or readme guide

Final Report

- ▶ **Third:** Standard Cells
 - ▶ Standard Cell layouts, schematics, etc.
 - ▶ User's guide
 - ▶ Email **.lib**, **.lef**, and **.v** files to me at teach-cs6710@list.eng.utah.edu
 - ▶ Also tell me where your Cadence libraries are.
 - ▶ I can slurp up the cell libraries if they are readable by your group.